



NTPL/POL

SANTA'S WORKSHOP INTL

JEPPESEN

12-25

25 DEC 13

24 Dec 2013

NORTH POLE VILLAGE

RNAV (GPS) Rwy 18

ARCTIC Center

NORTH POLE Approach

WORKSHOP Traffic

122.8

122.8 when ELFCOM inop.

122.8 when ELFCOM inop.

RLS (Reindeer Landing System)

Final Apch Crs 360°T

Minimum Alt CLAS 2500' (2450')

RLS DA(H) (CONDITIONAL) 250' (200')

Apt Elev 50' Rwy 18 50'

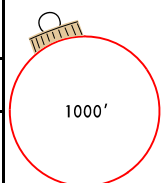
MISSED APCH: Climb to 2500' direct MSLTO, then RIGHT turn direct KSSNG and hold.

Alt Set: INCHES Trans level: FL 180 Trans alt: 18000'

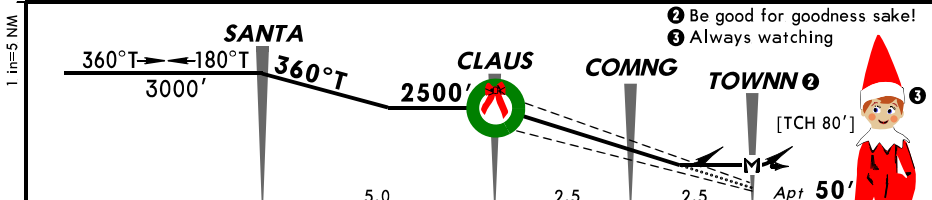
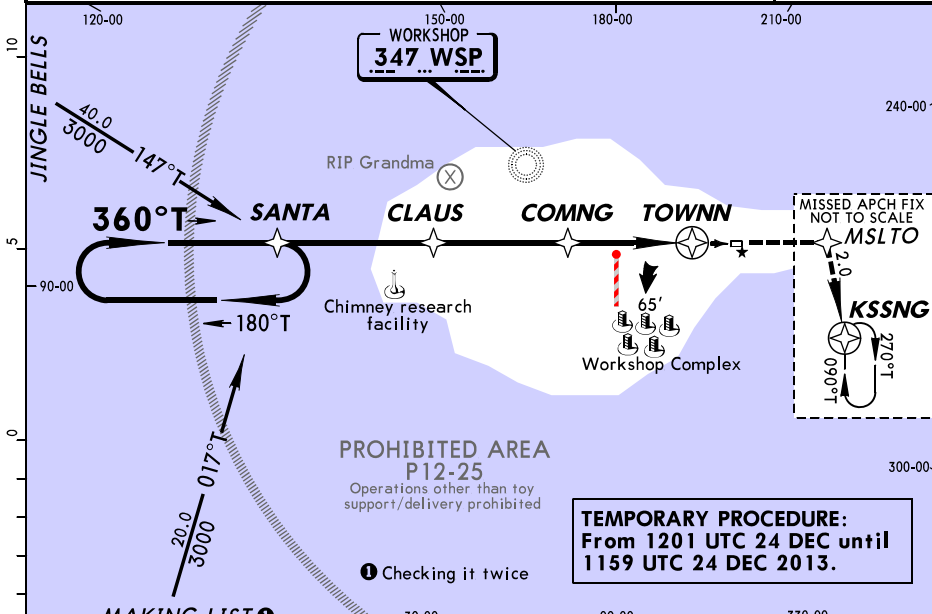
CAUTION: Departures may be illuminated by blinding red nose.

CAUTION: Supersonic heavy departures; non-sleigh traffic discouraged.

1. Reindeer practice flights year-round. 2. Flights in the vicinity may be conducted under the influence of egg nog. 3. No unapproved winter operations. 4. Postal flights with letters to Santa receive priority sequencing. 5. Reindeer and Elves on and in vicinity of runway. 6. Runway does not maintain stationary location.



MSA WSP NDB



Speed (Reindeer operating)	4	5	6	7	8	9	SALS TINSEL TWINKLE	2500'	D	MSLTO
Glide Path Angle	[7.0°]	N/A	N/A	800	998	1140				
MAP at TOWNN										

If Dasher sick, reduce speed by 2 reindeer

MERRY OPS	STRAIGHT-IN LANDING RWY 18						LOC		CIRCLE-TO-LAND	
	RLS DA(H) 250' (200')		LOC (Rudolph Out) DA(H) 400' (350')			2 or more reindeer inop MDA(H) 500' (450')		Authorized only when Rudolph available		
	FULL	TINSEL out	TINSEL/TWINKLE out	TINSEL out	TINSEL/TWINKLE out	TINSEL out	TINSEL/TWINKLE out	Rdr in Svc	MDA(H)	
6								6	750' (700') - 2	
7	RVR 0	RVR 40 or 3/4	RVR 50 or 1	RVR 40 or 3/4	RVR 50 or 1	RVR 60 or 1 1/4	1	1 1/4	2	7 650' (600') - 1 1/2
8								8		550' (500') - 1
9								9		450' (400') - 1

CHANGES: Noel procedure.

© JEPPESEN, 2013. ALL RIGHTS RESERVED.

## Naughty/Nice List Last Minute Changes

*It's never too late!*

<i>NICE</i>	Code	<i>NAUGHTY</i>	Code

*Nice behavior change codes:*

- 01 - Cleaning up room on own
- 02 - Helping parents
- 03 - Walking old lady across street
- 04 - Giving something to someone in need
- 05 - Cooperating with parents

*Naughty behavior change codes:*

- 11 - Not listening to parents
- 12 - Peeking at/snooping for gifts
- 13 - Mean to brother/sister
- 14 - Not following rules
- 15 - Misbehavior in school
- 16 - Taking things that don't belong to him/her

- 06 - Cooperating with brothers/sisters
- 07 - Helping with pets
- 08 - Helping in kitchen/with meals
- 09 - Being nice
- 10 - Other

- 17 - Getting into or stealing others belongings
- 18 - Vandalism/throwing rocks
- 19 - Being a hellion
- 20 - Talking to strangers
- 21 - Telling lies
- 22 - Other



**NTPL/POL**  
 Apt Elev **50'**  
 N 90.0 W 0.0

**JEPPESEN**

25 DEC 13  
 24 Dec 12017 (12-25)

**NORTH POLE VILLAGE**  
**SANTA'S WORKSHOP INTL**

WORKSHOP Traffic  
**122.8** when ELFCOM inop.

NORTH POLE Approach  
**122.8** when ELFCOM inop.

ARCTIC Center  
**122.8**

**CAUTION:** Reindeer games during toy loading may interfere with flight operations and ground movement.  
 Runway not suitable for conventional aircraft.  
 Reindeer on and in vicinity of airport.  
 ASDE-R Surveillance in system in use: Ground movement requires Mode C (Claus).



Letter processing and reading facility

Letters to Santa Drop Zone

Hot Cider Deice pad

500' SNOW



**ADDITIONAL RUNWAY INFORMATION**

RWY	REMARKS	USABLE LENGTHS		TAKE-OFF	WIDTH
		Threshold	Glide Slope		
09 ① 27	RL ② TINSEL ② TWINKLE SALS Reindeer vis Range (RVR)	500'	450' 500'	500'	100' 33m

- ① Only hoof brakes permitted on runway.
- ② Illuminated Dec 1 - Dec 31 annually.  
 Decorated trees at both ends of Rwy may be mistaken for Rwy lighting.

TAKE-OFF		FOR FILING AS ALTERNATE	
Rwy 18		RNAV (GPS) Rwy 18   Other	
Adequate Red Nose Illum.	Under-the-weather Nose Illum.		
6 - 7 Rdr	RVR 12	6	800-2   NA
	RVR 0	RVR 7	
8 - 9 Rdr		RVR 7	

'Twas the night before Christmas and all 'round the field  
 Santa's helpers were carrying all they could wield  
 'Twas time to pitch in and load up the sleigh  
 With every possible gift for work and for play  
 "All hands to your stations" Santa did say  
 "For it's almost time for the biggest of days"  
 The day of the year and the fruit of our work  
 Is almost upon us, so there's no time for a quirk  
 The manifest lists the destination of each toy  
 The fastest of sleds bound for each girl and boy  
 As the takeoff begins, the sleigh starts to scream  
 To deliver the toys as the children do dream  
 Back at the pole, a big collective sigh  
 The hard work is over, save for the big guy  
 He's good at it though, it's not his first jaunt  
 Bringing the toys you told him you want



## Letter and Wish List to Santa Claus

This year I have been:

Naughty

Nice

Dear Santa Claus,

---

---

---

---

---

---

---

---

---

---

---

Thank you,

---

## Christmas List

---

---

---

---

---

---

---

---

---

---

---

---

---

---

---

---

---

---

---

---

---

---

For Workshop use only:

Received on: \_\_\_\_\_

Orders sent to elves: \_\_\_\_\_

Naughty/nice checked by: \_\_\_\_\_